

# MARIKA BOWRIN

BSc Environmental Sciences student majoring in Environment and Resource Management, raised in Trinidad and Tobago

*What connects you to place?*

"Being out in nature and being able to sit in silence and observe the sights, sounds and smells unique to that environment grounds me in a place. Whether it be the crashing waves of the ocean or the sound of leaves blowing in the wind, sitting in that calm and taking in the natural world provides a sense of serenity."

# REZA YAZDANPANAHI

Persian musician and educator, raised in Shiraz, Fars provinces, Iran

*What connects you to place?*

"For me, people have more impacts than places. What they do and/or say stays with me, in fact, people create the vibe of the place for me."

# JOE SORBARA

drummer/ percussionist

*What connects you to place?*

"Everything connects me to place. Who I am is where and when and why and how I am. Perhaps I am a musician because I prioritize listening among the many senses that provide a moment-to-moment awareness of all of that?"

# BEN FINLEY

bassist and composer, raised in Campbellford, ON,  
Michi Saagiig Anishinaabeg territory

*What connects you to place?*

“When I head outside, I often go to try to work something out, but the fresh air, the sounds, and the buzz of interconnecting life put me in a new vibrant place of calm and stability.”

# CHRIS EARLEY

Interpretive Biologist, raised in Strathroy, Ontario

*What connects you to place?*

“The environment grounds me.”

# SOPHIE BROWN

Harpist and Researcher, raised in South Wales, UK

*What connects you to place?*

“I connect to place by feeling grass under my bare feet, by smelling the sea and by the total body experience of swimming in cold water. Oh, and by walking. Sometimes for months...”

# CHRISTA WISE

Christa Wise, Zoology Student and the University of Guelph, Arboretum Summer Naturalist Intern, born and raised in Waterloo, ON

*What connects you to place?*

"It is less about the physical location that connects me to a place, rather it is the experiences I have there with people and the environment. I think of my childhood home less in terms of its physical location but more about the environment surrounding it and my history with it; catching frogs in the pond behind my house as a child, going for walks with my family through the woods nearby, and collecting the wild foods that grow in my own backyard. These are the types of things that connect me to a place."

# MICHELLE BELTRAN

Naturalist intern, raised in Oakville, Ontario

*What connects you to place?*

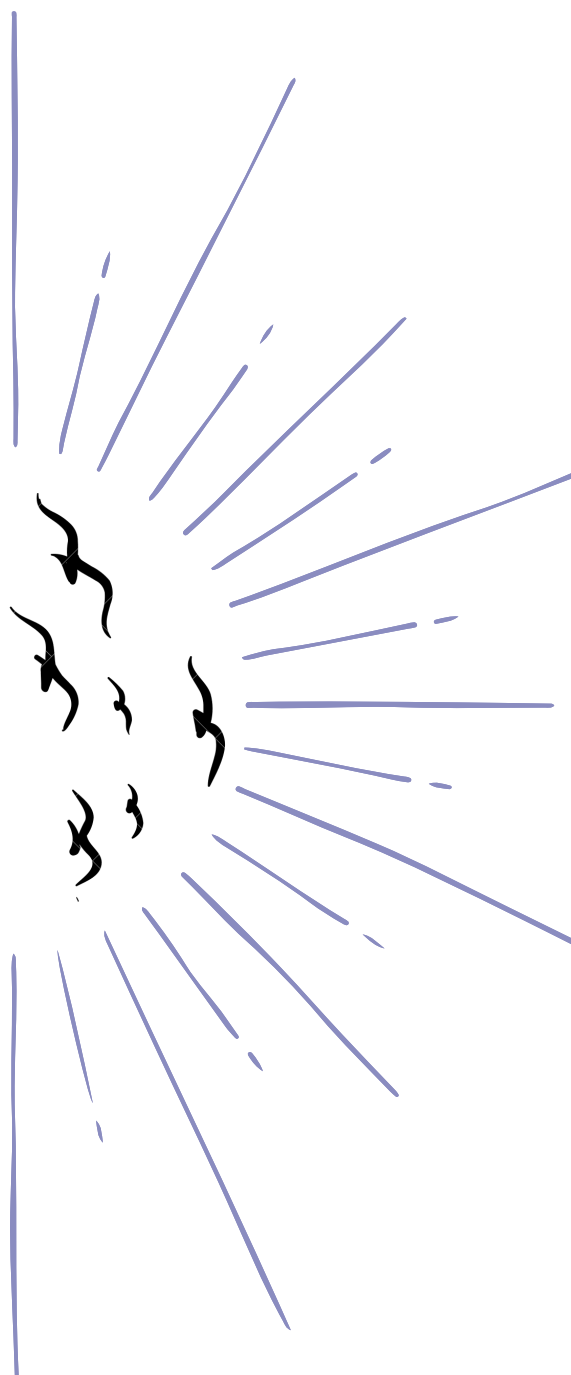
"Moments of exploration and observation remind me that no matter where I go, I'm surrounded by nature's marvels."

# annais linares

music maker + student, raised in sunny Palm Springs, CA

*What connects you to place?*

"the nuances of landscapes and people I admire connect me to place!"



# SOUMD BOUMDI





# WHAT CONNECTS YOU TO PLACE?

## Farley Puzos

Each of the five gardens is represented by a section or movement of music. See if you can notice the difference in diversity between the garden and the lawn; or the way nothing goes to way coated in

### **Récluse**

movements IV. The final garden piece contains elements of all of the gardens. Think over the garden?



## WALK 2

## info

Sound connects us; it helps us navigate; it helps us realize who is where in space; it signals our co-presence. You might say we are bound by sound!

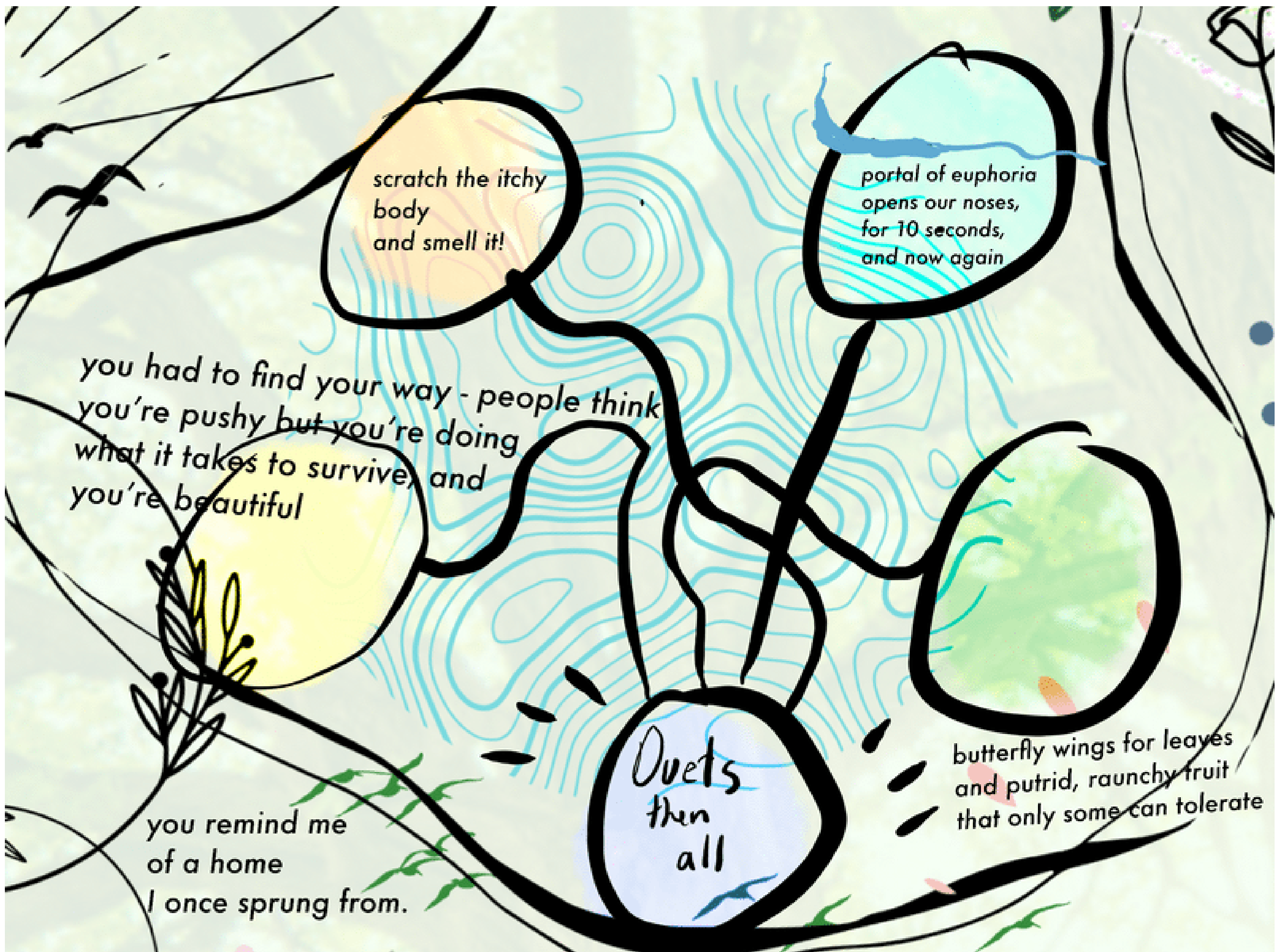
In late August and early September 2022, annais, Sophie, Joe, Reza and Ben (musicians in the Critical Studies in Improvisation program at the University of Guelph) went on a self-guided walk followed by four walks guided by Chris, Michelle, Marika, and then Christa (environmental facilitators working at the Arboretum).

On these walks, Chris, Michelle, Marika and Christa shared their interests and passions and took the band on the same routes you travelled today. They also shared some information about ecological restoration projects that the Arboretum is undertaking, some large + collaborative, and some each of us can do in our backyard.

The music of *SoundBound!* came out of the band's reflection of these walks. Each member of the band has taken a turn leading a collaborative process for each piece. We are pleased to share with you five pieces from the five walks.

# WALK 4

ginkgo tree, katsura, sassafras, monkey puzzle, vine



# WALK 3

biodiversity always exists  
every place is teeming with difference. even the same  
species have different shades of leaves.  
the gestalt of a tree  
is seen, with s p a c e, so listen to us play.  
you may hear a trace of the gardens whose camaraderie  
depends on human cultures, but whose existence  
we depend on, for life.

# WALK 1 self-guided



